

LEAF SAP SAMPLING GUIDE

Tomato



Keep in mind!

- Avoid outer rows and first 20 feet of a row.
- Sample leaves with average leaf quality. Sample areas of abnormal growth separately.
- Sample consistently; sunny side of plant, avoid extreme weather etc.
- If leaves are wet at sampling lightly pat dry before shipping (moisture influences results).
- Sap Analysis data works best when used in progression. The more samples the better crop nutrient uptake can be illustrated and understood.
- Note fertilizer and irrigation times and application rates if possible.
- Sample either before or 3+ days after fertilizer/pesticides have been applied.



Sampling Instructions

Sample Time: Sample in the morning before 11 a.m. and temperatures less than 80 °F for adequate leaf tension and moisture. Avoid sampling in the rain. Store samples in cooler.

Sample Size: Collect 80+ grams each of both new (young) and old compound leaves + petiole for a collected total of 160+ grams per sample set. Bag new and old compound leaves + petiole separately in zip lock bags labeled New and Old.

Initial Sampling: Begin sampling when plant develop 5+ compound leaves. Collect NEW fully developed compound leaves + petiole only. New leaf sample will be 2nd or 3rd from growth point. Place stacked compound leaves + petiole in zip lock bag labeled NEW.

Sequential Samples: New & Old leaf set every 2+ weeks.

NEW- Youngest fully expanded compound leaves + petiole from the top part of the plant. Place stacked compound leaves + petiole in gallon zip lock bag labeled NEW.

New leaf = newest yet fully developed compound leaf

OLD- Oldest still healthy and functional compound leaves + petiole closest to the base of the plant. Place stacked compound leaves + petiole in separate zip lock bag labeled OLD.

Old leaf = oldest yet still viable compound leaf

****Do not mix varieties when sampling as this may cause variation in analyses****

Science You Can Use, Partners You Can Trust

160 Veterans Blvd, South Haven, MI 49090



(269) 637-5658



(888)-685-1628

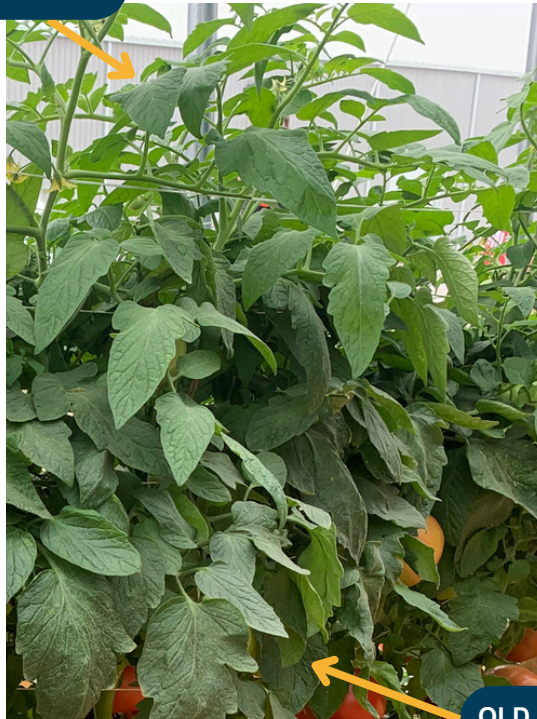
LEAF SAP SAMPLING GUIDE

Tomato



NEW Leaf Sample

PC: Horse Progress Days, Shipshewana



OLD Leaf Sample

Proper sampling includes full **COMPOUND LEAF** as seen here.



Keep samples cool. Ship overnight or 2-day on M/T/W (morning arrival time) with ice packs. Samples should not come into direct contact with ice packs. Let air out of bags before shipping.

All samples must be accompanied by a fully completed Sample Submission Form. Fillable version available on our website www.newagelaboratories.com.

Science You Can Use, Partners You Can Trust

160 Veterans Blvd, South Haven, MI 49090



(269) 637-5658



(888)-685-1628